

# Welcome to Westfund

Westfund+ partners introduction



# The Westfund difference



We're a different kind of health fund. We put people over profits.

---

As a not-for-profit and member-owned health fund, our revenue goes back into the fund to maximise member benefits.



We're proudly Australian owned and operated.

---

Westfund helped to forge the industry in Australia back in 1953 – with origins dating back to 1881. We've never lost sight of meeting the needs of our Australian members.



We help people make sense of healthcare.

---

In an industry as complex as ours we're here to help people find the right cover that suits their needs. It's important for us to be trusted and transparent.



We're invested in our members and the communities we serve.

---

Our belief in empowering communities, getting the most for our 135,000+ members and making sense of healthcare has always been the foundation of our Feel Good Cover.



We started in Lithgow, but are available nationwide

---

Members can access healthcare services across Australia. We have one of the largest contracted private hospital networks, a national Provider of Choice Network and a range of digital health and wellbeing programs.



“We have been with Westfund now for over 5 years. I've always found their service to be exceptional and prompt. The cover that we enjoy is better value than our previous big name insurer by a long way, both in premiums and benefits paid. I'm more than happy to recommend Westfund to anyone”.

- Phil C, NSW

You're in good company

## Not-for-profit health fund

As a not-for-profit health fund, we focus on keeping premiums low and paying benefits back to our members. It's why over 135,000 Aussies choose Westfund as their health fund.

## A health partner to the regions.

We're more than a health fund. We're a not-for-profit organisation building a new kind of health care for collective good.

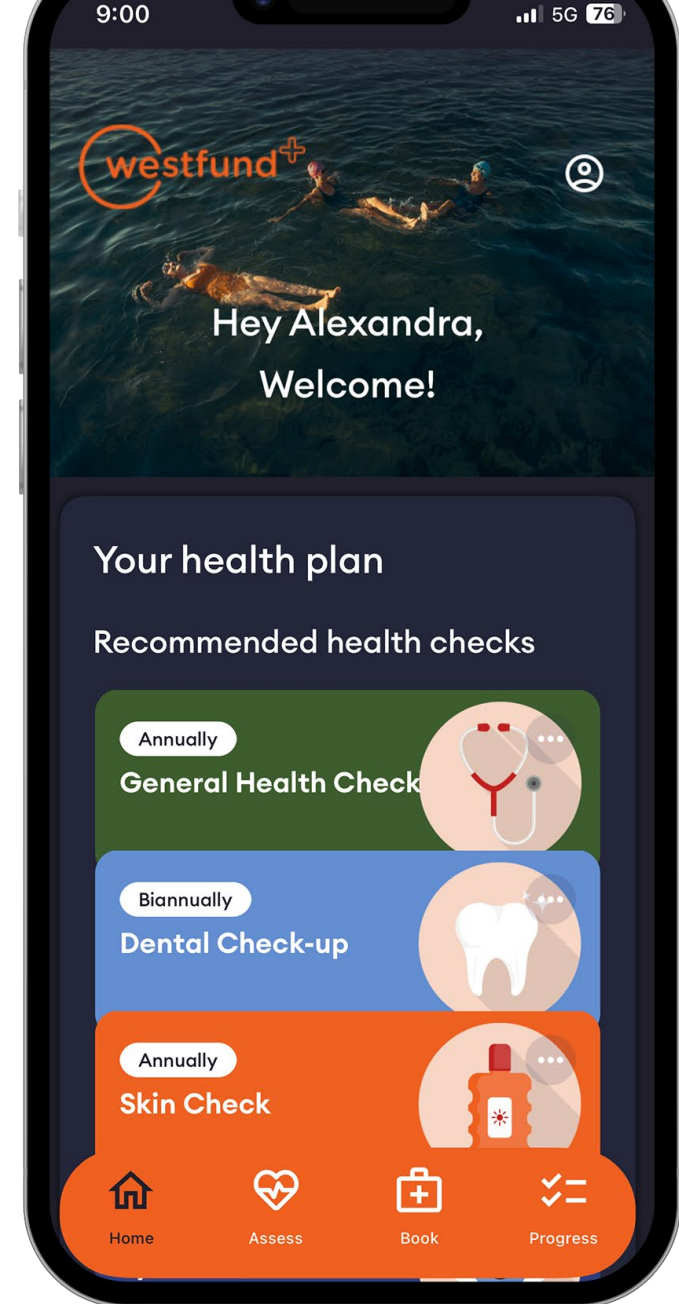


## You're part of the Westfund+ network of programs, partners and providers

From keeping up with routine health checks, finding nearby health services, or looking for ways to get more from their cover, Westfund+ puts everything our member's need right at their fingertips.

Benefits include:

- ✓ Annual health check-ups at participating pharmacies
- ✓ Health check reminders when you need them
- ✓ Pro tips to get more out of your cover
- ✓ Explore mental health pathways & connect with Westfund partners
- ✓ A preventative health plan built for you



We’re always looking for ways to be healthier and connected. That’s why our Health and Wellbeing programs are included in eligible covers, to help members reach their health goals.

## Get home from hospital sooner:

---

### Hospital Care at Home

Recover in the privacy of your home, supported by your healthcare team.

[More about Hospital Care at Home →](#)

---

### Rehab at Home

Have the option of doing that all-important rehabilitation out of hospital.

[More about Rehab at Home →](#)

---

## Cancer Support

---

### Cancer Support Complete

Our digital health program provides quality, personalised care via phone and video calls to help cancer sufferers maintain physical wellness.

[More about Cancer Support Complete →](#)

---

## Managing a chronic health condition:

---

### Healthy Weight for Life

Manage your lifestyle after a diagnosis of a cardiovascular condition, Type 2 Diabetes or Osteoarthritis without leaving home.

[More about Healthy Weight for Life →](#)

---

### MotionPlus

MotionPlus Program is a 12-week movement improvement program for members with hip and knee joint osteoarthritis who have surgery planned for more than 3 months into the future.

[More about MotionPlus →](#)

---

## Take care of your Mental Health:

---

### Comprehensive Mental Health Support

Get the help you need to manage; worry, feeling low, stress and anxiety, poor sleep or fatigue. This eight to sixteen-week program is delivered by mental health professionals.

[More about Comprehensive Mental Health Support →](#)

---

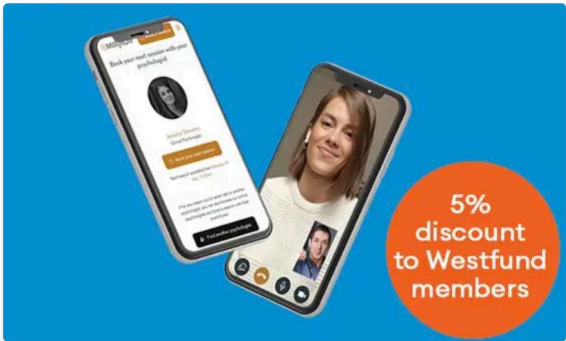


Plus, we're working to connect our members to some of the best digital health programs and providers, available when and where they need it.



New to the Co-Op  
**Doctors on Demand**

Access a qualified practitioner wherever you are. Doctors on Demand is a trusted platform that offers telehealth appointments any time, day or night. Westfund members can get \$5 off Standard Appointments - eligibility criteria applies.



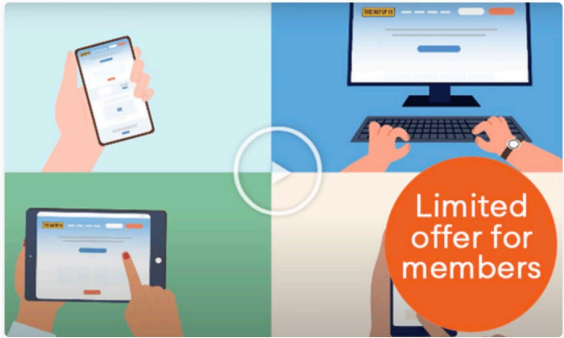
Mental Health  
**My Mirror**

My Mirror's team of AHPRA and Medicare registered general and clinical online psychologists are here to help you start your mental health journey, no matter where you live in Australia. Eligibility criteria applies.



New to the Co-Op  
**Birth Beat**

We've partnered with Birth Beat to give the first 50 members who sign up for their 'Ultimate Birth Course' a \$100 discount\*. This online program will support you through your pregnancy, birth and early parenting journey. Eligibility criteria applies.



Mental Health  
**THIS WAY UP**

Clinically-proven online mental health programs designed to tackle feelings of stress and low mood. Eligibility criteria applies.

Available via  
the Health  
Co-Op

# What's available for members at the pharmacy



Claim up to \$75 (singles) or \$150 (couples and families) on TGA approved vitamins, probiotics and Omega-3.



Claim up to \$60 back per member on health checks under the Preventative Health Benefit with Extras cover

## High Extras Policy Summary



Welcome to Feel Good Cover.  
Health insurance that doesn't just do its job, but adds an extra level of care.

### Why Westfund?



We help people make sense of health care



We provide quality products with a proven track record



We're a not-for-profit that helps you get the most from your cover



We're proudly Australian owned and operated

### This Extras Cover includes:

- ✓ No out-of-pocket costs for selected preventative dental services at any Westfund or Provider of Choice dentist.\*
- ✓ Extended\* and Disability Dependant\* cover options available.
- ✓ No gap glasses and an extra member benefit for prescription glasses and contacts purchased at a Westfund Eye Care Centre.\*\*
- ✓ Unlimited emergency ambulance cover and \$5,000 per member for non-emergency ambulance trips.
- ✓ Cover for our full range of services including dental, optical, physio, chiro and other therapies.
- ✓ Benefits for extras that help you manage your health, like gym memberships, vitamins and preventative health checks.

### Who should love this cover

High-level Extras health insurance best suited to health-loving families. Provides a higher level of benefits on the most popular services such as optical, dental, physio and chiro. Includes no annual limit for general dental, a generous lifetime limit for orthodontics and great benefits for all the kinds of support families need including mental health support, speech pathology, vitamins, nutrition and a broad range of health aids.



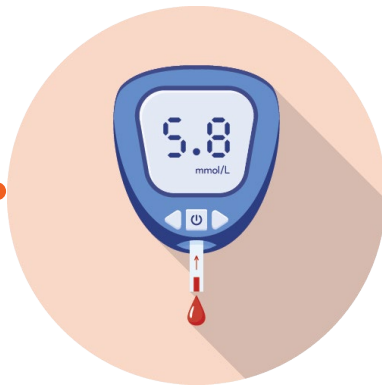
\* Dependents up to 31 stay covered if unmarried or not in a bona fide domestic relationship.

\*\* A dependent with a disability is a person who is over the age of 31 and participates in the National Disability Insurance Scheme (NDIS) and holds an active NDIS plan.

# Annual limits and waiting periods apply.



Claim up to \$400 per member on non-PBS prescriptions or vaccinations.



Claim on multiple health aids like blood glucose monitors, blood pressure monitors, respiratory aids and mobility supports.

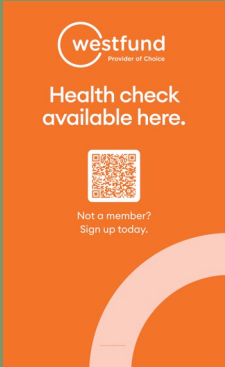
Information provided does not represent the benefits available for our full Extras range. Limits, claiming and benefit eligibility criteria applies.



# What's available to help promote the partnership instore



01  
Storefront  
window decal



02  
1400X850  
pull up banner



03  
Printed member health  
program brochure  
(pack of 50)



04  
Digital  
Provider of Choice  
logo

# Thank you

Information provided is general information only. No advice or representations to be made in relation to our private health insurance products or member eligibility for benefits or services.



Head Office  
59 Read Avenue  
Lithgow NSW 2790

[westfund.com.au](http://westfund.com.au)